



Photo: ZS 1200 CN with optional parking desk and 3 C-frame tools

## Tensile specimen punches (C-shape frame)

ZS400 | 650 | 1200 | 1500 | 2000 (kN)

Capacity kN ZS 400 + 650 + 1200 + 1500 CN + 2000 CN

Layout C-frame single

C-frame with beside parking desk for changing tools

C-frame TWIN with two working area

C-frame TRIPLE with three working areas

Our hydraulic presses are the first choice in quality and price ratio in the world of testing since 1970. Especially for this application we developed these presses, blanking tools and a unique specimen grinding machine PSM 2000 (grinding machine to remove the damaged zone in parallel length (Lc)).

### Comparing this press with other principles

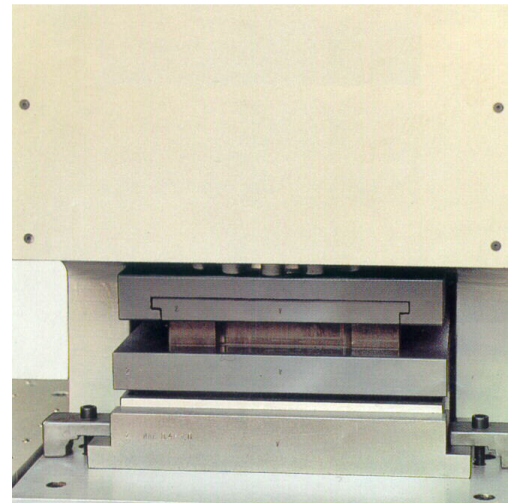
Our presses are especially designed for the requirements of the world of test in sheet metal industry and will be manufactured (even they are standard products) customized to your requirements. Because of reduced functions we are able to manufacture these presses for reasonable prices – often less expensive than a used press from second hand machine dealers. This limit in functional use (only designed for this job) also gives the advantage that your production won't be occupied by this machine for other jobs - the punch is available for quality department 100%.

### Advantages of our presses

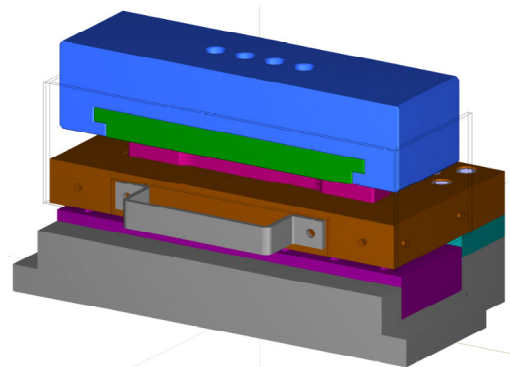
These tensile specimens are designed for slow cutting of the tensile specimen. Different to high speed hydraulic presses or eccentric presses this will reduce the cold hardened edge to a minimum of only 10 % of the sheet metal thickness. We recommend: Don't use a high speed press or eccentric press because this will increase the damage of the edge up to 35 % of the sheet metal thickness. This enormous cold hardening zone is not possible to remove with a specimen grinding machine.



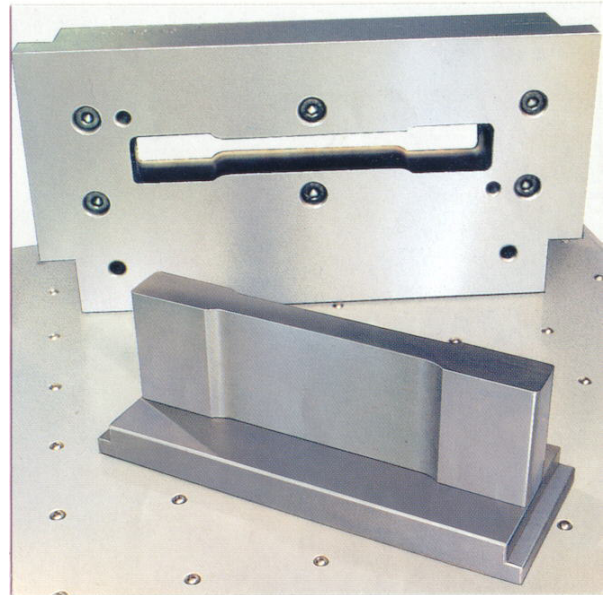
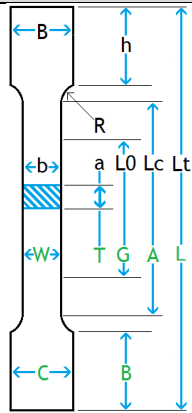
Photo: Example for a c-shape specimen punch ZS 1200 with optional beside desk as parking tables for additional tools.



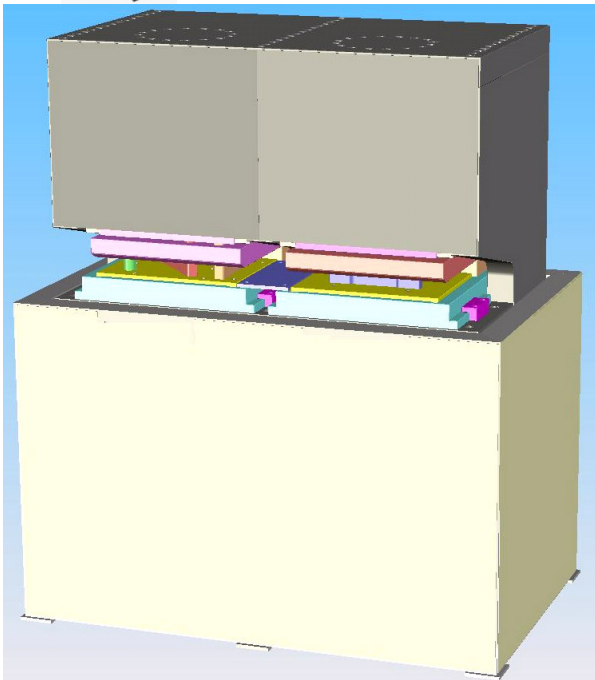
On the press table fixed blanking tool. In the top of the tool you may find the quick changing device (t-slot-connector): "Drawer" and adapter. The tool change needs <90 seconds or less (standard tool types).



ZS	400	650	1200	1500	2000
Punching force kN	400 kN	650	1200 kN	1500 kN	2000
Tons ~	40 t	65 t	120 t	150 t	200 t
Drive	electro-hydraulic				
Power supply	400V - 50/60Hz - please indicate your power supply at order / other on request				
Power consumption	5,5	5,5	7,5	7,5	7,5
Fuse power supply	16A slow	16A slow	32A slow	32A slow	32A slow
Stroke mm	35 (or depending on different application)				
Strokes per minute	6	6	4	3	3
Oil pressure bar	245	293	304		
Weight approx. kg	1150	1200	1750	3400	5500
Dimensions (cm):					
Width					
without park desks	64	64			
with optional tables	182	182	193	193	
depth mm	81	81	90	90	
height mm	163	163	171	180	180
working height mm	101	101	106	106	106
specimen length max. Lt / L mm	300	300	300	300	300
Specimen shape	ISO / EN / DIN / AFNOR / BS / ASTM / JIS / GHOST / customer sketch				



Dismantled punch tool for sheet metal tensile specimens (on tool parking desk)



TWIN – double press with two working areas



**Technical changes reserved**

Other models and capacities available, please contact us